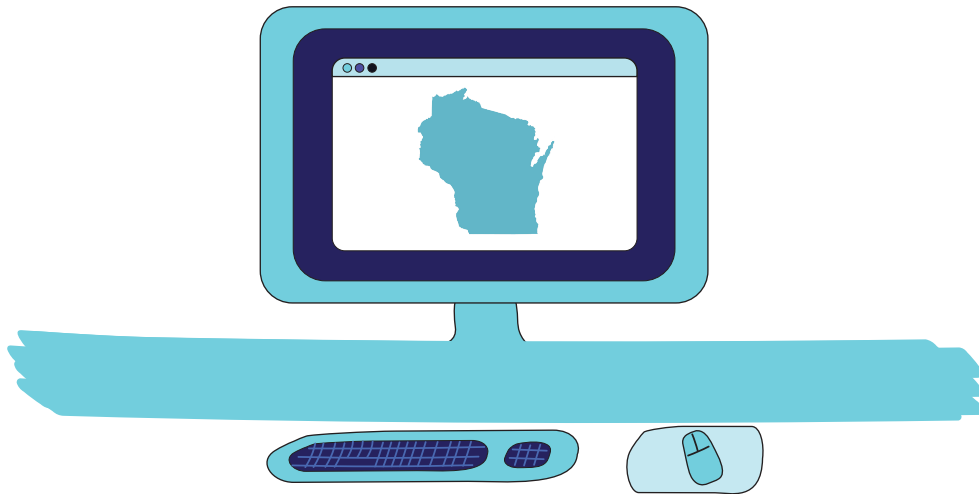


What to Do with Used Sharps in Wisconsin*

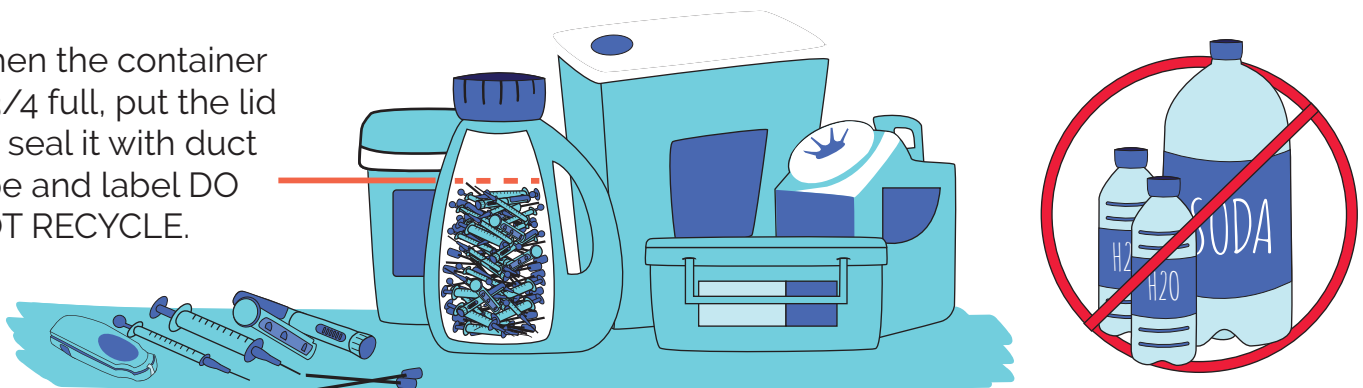
Sharps refer to: needles, syringes, lancets, auto injectors, including epinephrine and insulin pens, infusion sets, and connection needles/sets

Check www.SafeNeedleDisposal.org for local guidance on sharps disposal.



Put used sharps in a strong, plastic container.

When the container is 3/4 full, put the lid on, seal it with duct tape and label DO NOT RECYCLE.



Use the ZIP Code search on www.SafeNeedleDisposal.org to locate container disposal options near you.



Containers of used sharps cannot be placed in the household trash in Wisconsin.

**These regulations are specific to the state of Wisconsin.
How you dispose of used sharps safely may be different, depending on where you live.
Visit www.SafeNeedleDisposal.org to find regulations on your state.*



SafeNeedleDisposal.org

Be sharp about sharps.