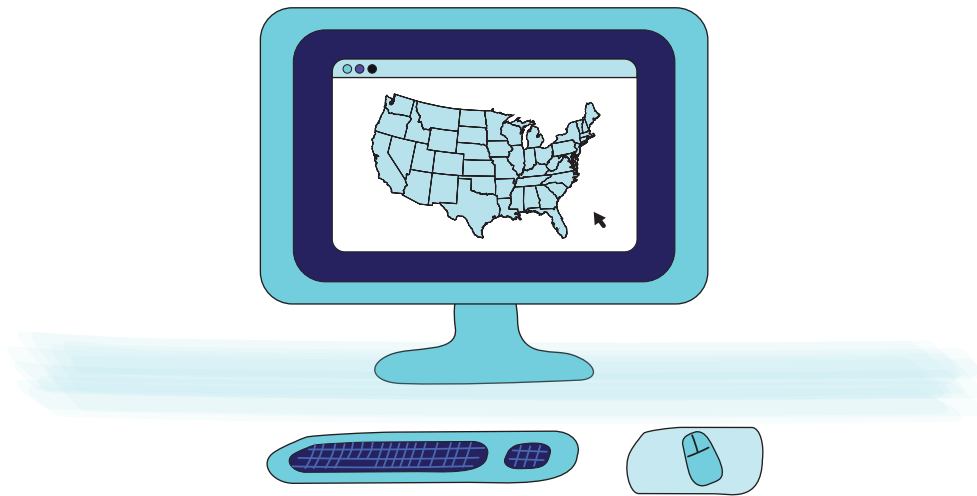


# What to Do with Used Sharps

**Sharps** refer to: needles, syringes, lancets, auto injectors, including epinephrine and insulin pens, infusion sets, and connection needles/sets

Check [www.SafeNeedleDisposal.org](http://www.SafeNeedleDisposal.org) for local guidance on sharps disposal.

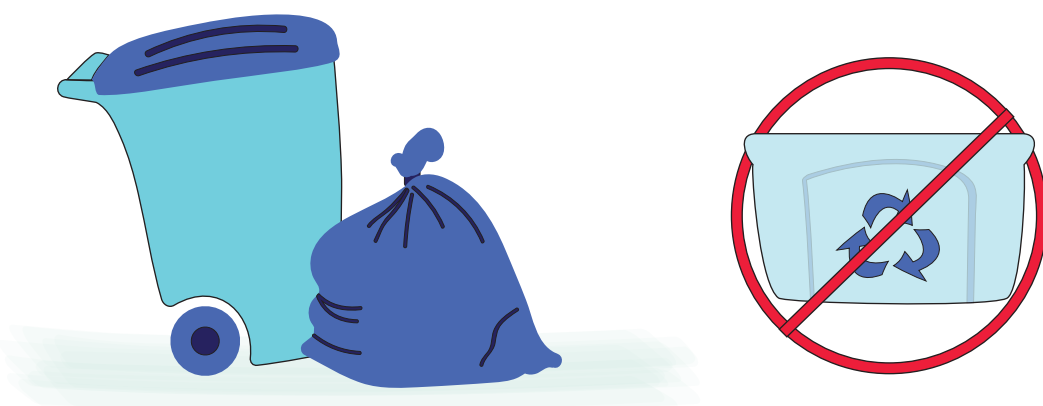


Put used sharps in a strong, plastic container.



When the container is 3/4 full, seal it.

Put the plastic container in the household trash—**don't recycle!**



Containers of used sharps cannot be placed in the household trash in California, Massachusetts, Oregon and Wisconsin and certain counties or municipalities in Florida, Idaho, Virginia and Washington. Visit [SafeNeedleDisposal.org](http://SafeNeedleDisposal.org) for more information on safe sharps disposal in your area.



**SafeNeedleDisposal.org**

Be sharp about sharps.